

User Guide Book



Hello, World!



Scan the QR code to download tracking APP 365GPS

Tracking Web: www.365gps.net

Android APP: [365GPS](#)

iOS APP: [365GPS](#)

Login ID: IMEI number (15digits sticker on the device)

Default password: [last 6digits of IMEI number](#)

Main feature:

- Network: GSM 850/900/1800/1900MHz, GPRS Class 12
- Positioning modes: GPS + AGPS + Wifi(optional) + LBS
- Tracking System: APP + Web + SMS

- Track + Historical Trace Playback + Geo-Fence
- Voice Recording + Pick up + Sound Call Back
- Support one/two ways SOS communication(GPS SIM card airtime is required), similar like phone talking
- GPS location accuracy: within 10 meters outdoor(may be affected by the environment)
- Wifi location accuracy: within 50 meters(optional for some models)
- LBS location accuracy: above 100 meters
- Working Temperature: -20°C ~ 45°C / Humidity: 5% ~ 95%
- Dimension: 85.5*54*7.2mm
- NW: 46g(without packing and accessories)
- Battery: rechargeable 1500MAh Li-polymer battery

1、 Preparation work

1. Please prepare a nano SIM card which support both GSM and GPRS network, turn off PIN code.

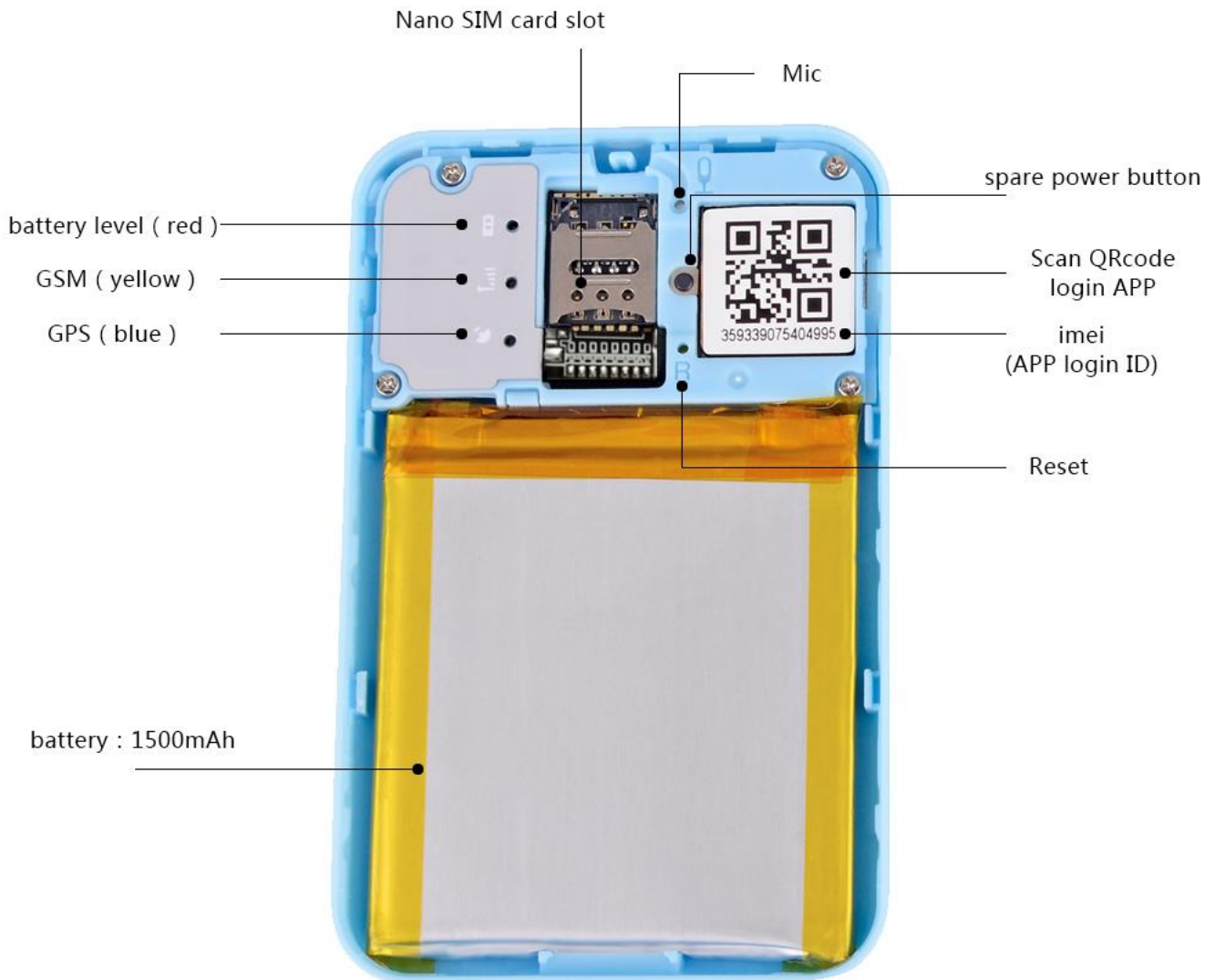
The tracker consumes about 30MB GPRS data per month.

2. Please make sure the SIM card for GPS tracker supports make a regular phone call, so you can use the tracker to make SOS call and realize the pick up function. (If don't use SOS, a data SIM card with GPRS works too.)

3. Download and install our free mobile APP in your phone.

2、 Power on the GPS and make GPS online

Reference Photo as below:



Open the **GPS tracker cover** and **Insert the SIM card**

Power On: long press power key for 3seconds(3 LED will light up together and then blinking)

Power off: long press for 9 seconds (3 LED light up then off)

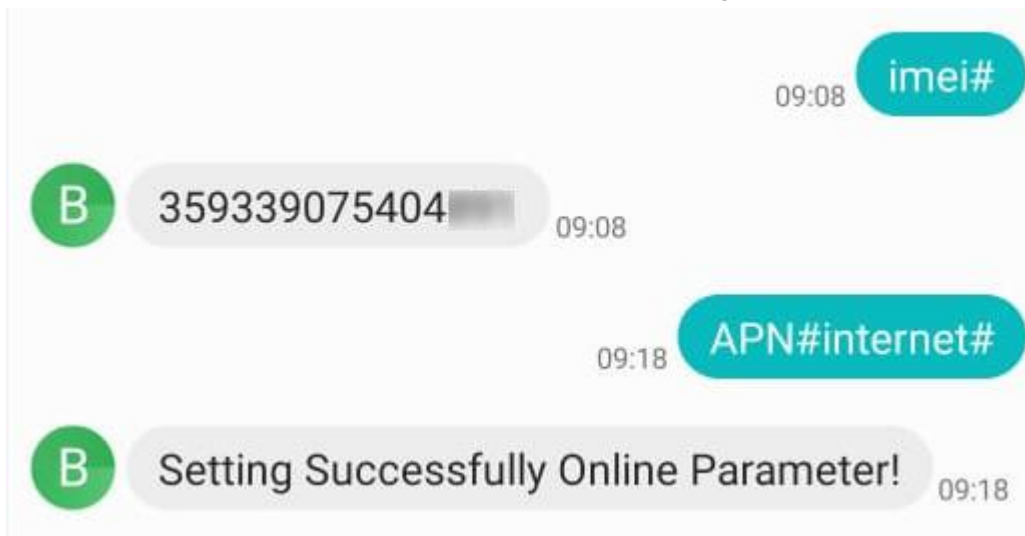
Attention:

After the GPS tracker power on for 2 minutes with 3 LED blinking, you may meet the following conditions:

Condition A: if the yellow LED blinking slow, that means GPS is online, please use APP GPS365/PC web to track it directly.

Condition B: if the yellow LED blinking fast, please send SMS command ""imei#", after the GPS tracker response your phone with correct 15 digits imei #, then please send SMS command to set APN:

(please put your GPS tracker SIM card in your phone to get the correct APN parameter if necessary)



APN settings: “APN#parameter#account#password#
If your gps sim card don't have account and password,
then send “APN#parameter#” only.

Condition C: if the yellow LED always on(don't blinking), means the SIM card insertion incorrect or invalid SIM card, please take SIM out insert SIM again or change new GSM GPRS SIM card.

3、LED lights

Red: Battery Level LED, fast blinking low battery, slow blinking is normal

Yellow: GSM Signal LED, bright error, fast blinking search network, slow blinking connected network

Blue: GPS signal LED, fast blinking search GPS satellite, slow

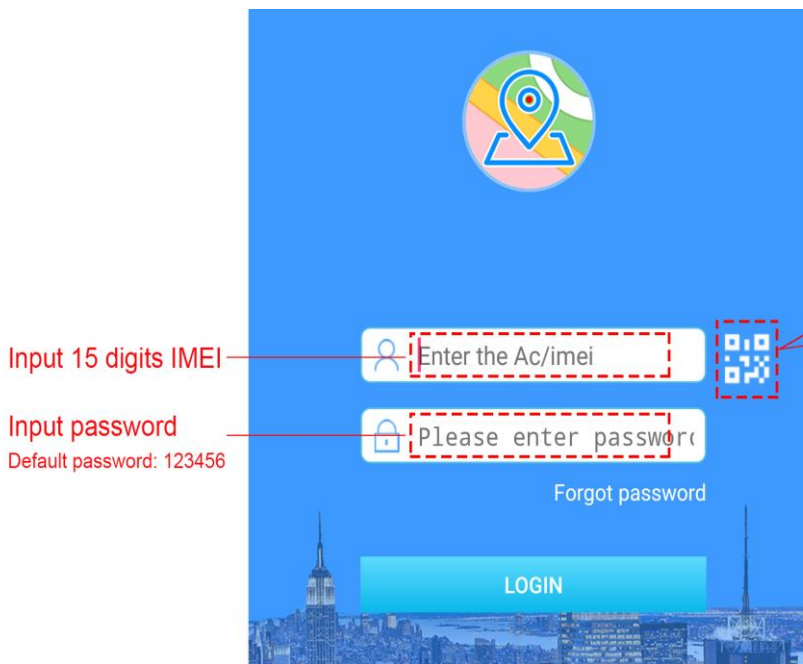
blinking connected GPS satellite

4、 Login the GPS tracker in APP/Web

Scan the QR code or input the IMEI # to login the APP.

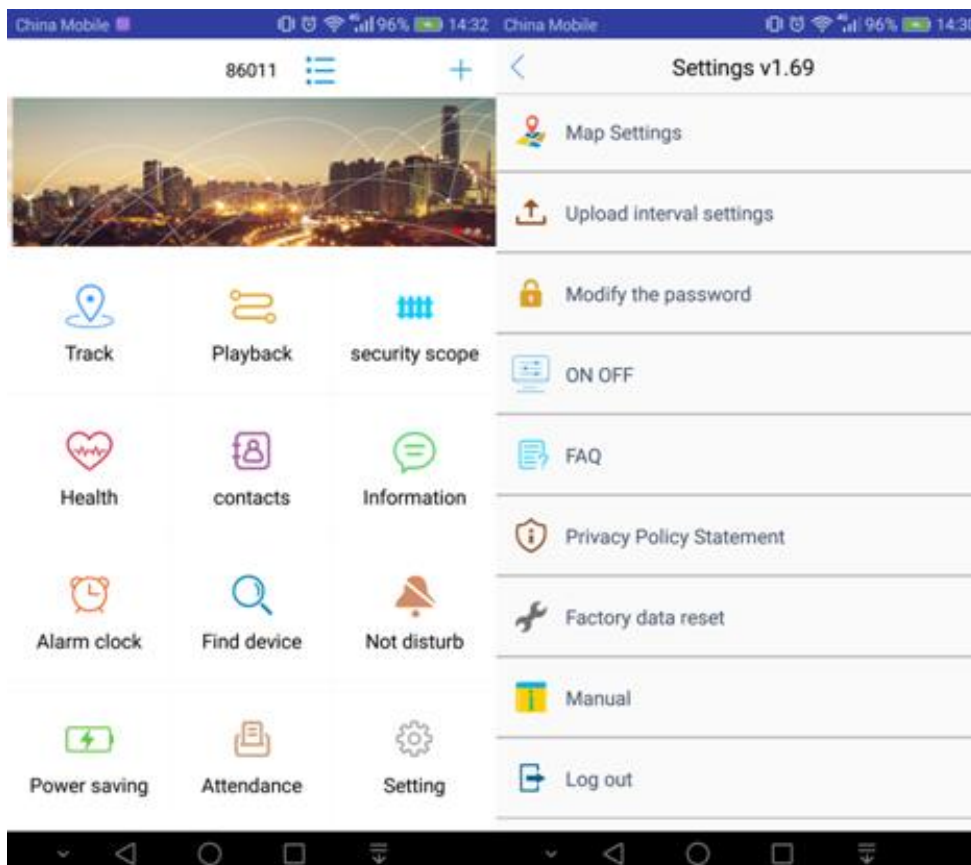
Login ID: IMEI number (15digits)

Password: last 6digits of imei



You can also click here and use your phone camera to scan the GPS tracker QR code to login APP **GPS365** automatically

5、 Main Functions: (interface of GPS365)

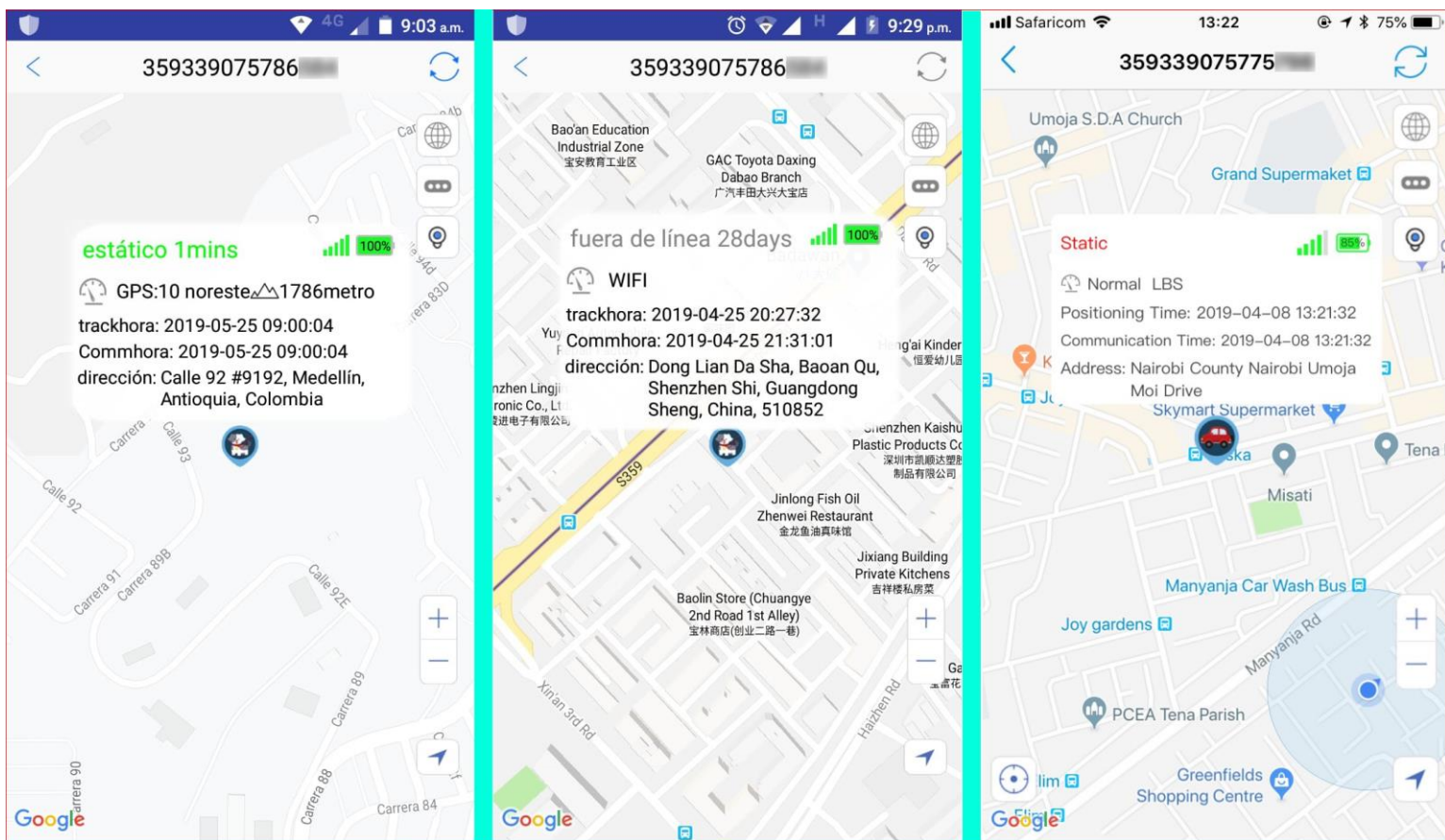


5a、 Track

A: GPS positioning: when the GPS tracker stay outdoor/good GPS satellite signal environment,a accurate GPS location

B: Wifi positioning: when indoor device will capture the wifi router MAC address and take the MAC address as location.

C: LBS positioning: when both GPS and wifi signal are not available for the device, it will give you a general location according to the nearest GSM signal tower around it.



GPS Location

Wifi Location

LBS location

GPS tracker location accuracy:

GPS: about 10 meters outdoor

Wifi: about 50-500 meters. Attention that wifi location visits telecom carrier's database to get location , in some countries' the carriers' database not open to the public, maybe wifi location can't work, for example Germany.

LBS: above 100 meters. Depends on how many Base Station

Towers around the GPS tracker. Normally, if the tracker stay in the city, the LBS location accuracy will be much more accurate than that stay in the countryside.

Remind: you can turn off LBS/GPS location function to save battery if it's necessary. Also Power/on by Alarm setting in this page to save battery.

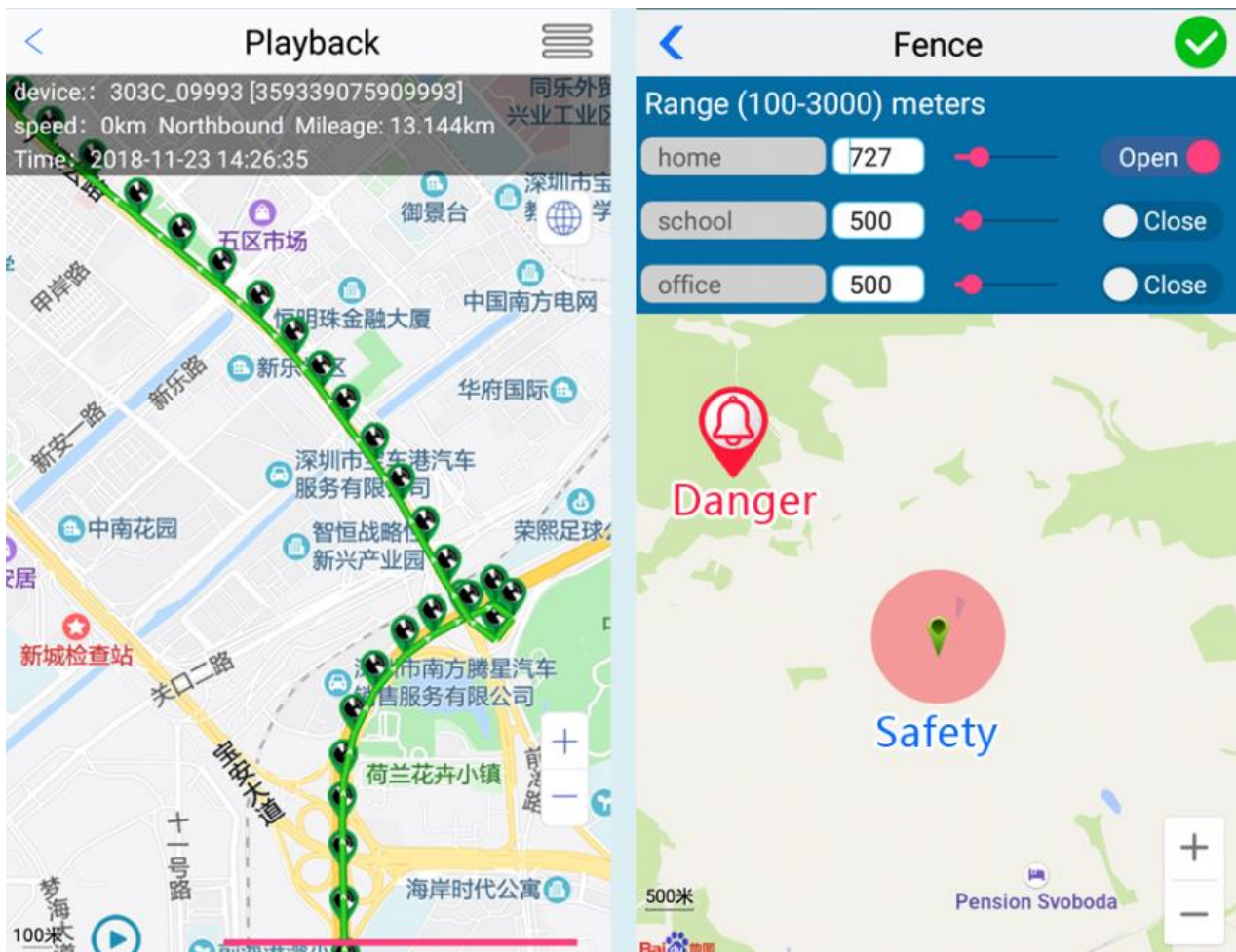
5b、 Playback and Geo-fence

5b1: Playback:

Please choose the start time and end time and other options in the APP to check the historical trace of your GPS tracker and show it on the map as below.

5b2: Geo-fence:

You can set a security range on the map in your app, once your GPS tracker out of the preset safe range, you will get alarm.



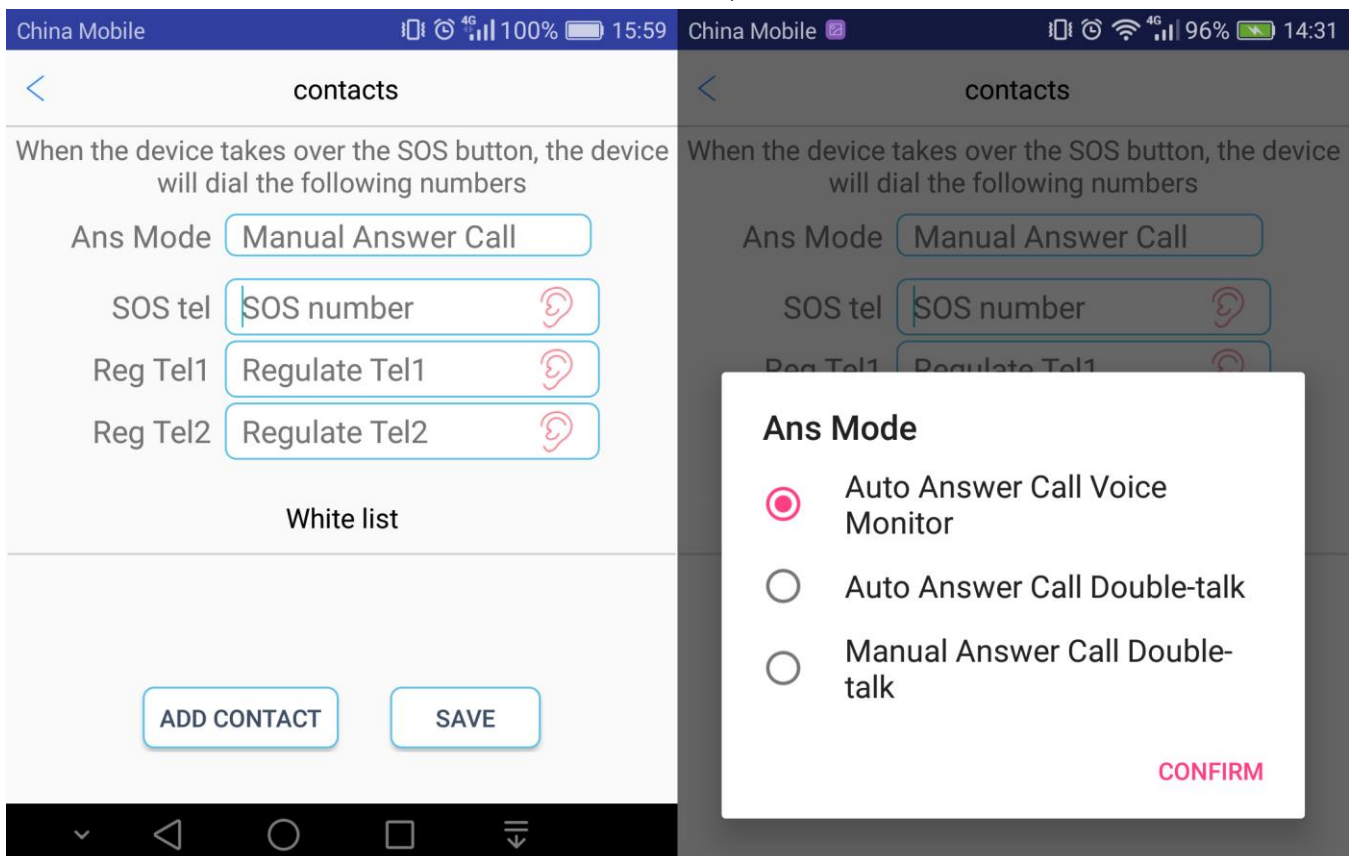
5c、 Contact (SOS and pickup)

Please set the SOS and pick up tel #(your phone #) in the APP, then long press the tracker power key for 3 seconds till you heard the ringtone “Dingdong”, the tracker will call the SOS phone #. please make sure there’s **airtime** in your GPS tracker SIM card. You can also call the tracker directly.

After you preset all the 3 SOS phone #, long press the SOS button for 3 seconds, the GPS tracker will send SOS to the SOS tel firstly, if SOS tel don’t response, it will dial the “regulate Tel1” automatically, if “regulate Tel1” without response, it will dial the “regulate Tel2”;

Pickup = Contacts -- Answer Mode: Auto Answer Call Voice Monitor

It means: The device will auto pick up your call and no ring, you can hear the voice around tracker, tracker side no sound.



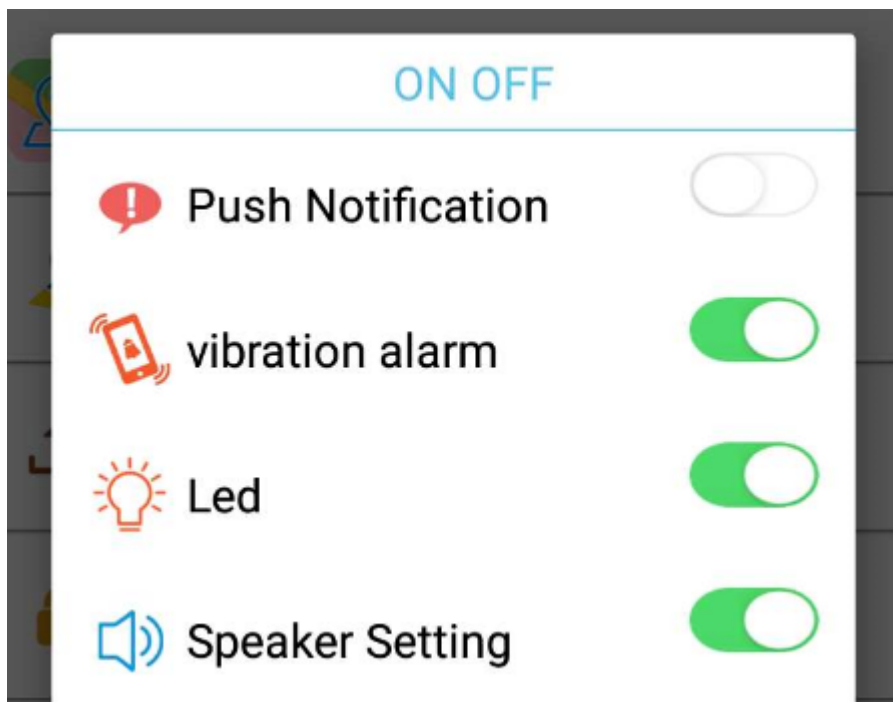
5d、 Information (Voice Recorder)

You can click the MIC icon in the App to send voice recording request to the GPS tracker to get voice clips around it, it will send back voice clips soon.

Attention: Voice Recorder to APP consumes a lot of sim card's data ,maybe have some delays after you sent the request.

5e、 Vibration Alarm

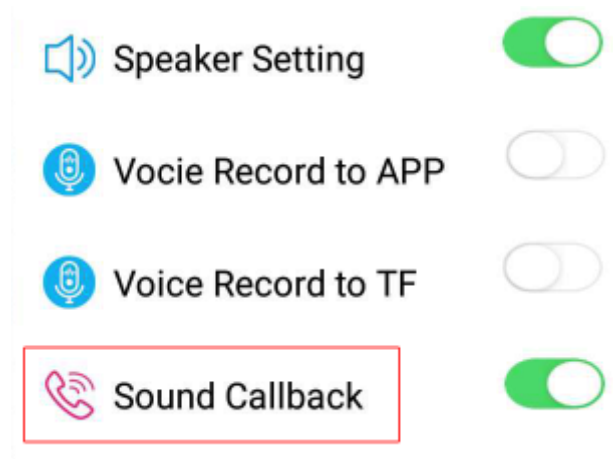
Please enable “Push Notification” and “Vibration alarm” in the setting menu, if someone moved your GPS tracker, the tracker will send vibration alarm push message to your phone timely.



You can also turn off LED lights and Speaker in this page, after turn off, the LED always off unless charging battery on, the speaker no longer ring out always keep silence.

5f、 Sound Callback

Send SMS command: “ **000 #number#number#number#** ” , to bind callback phone. if there’s any sound up to 60db, the tracker will call your phone # automatically.



6、 Related SMS commands

6.1 Inquire IMEI No.: “imei# ”

6.2 Restore default password: “pwrst”

6.3 Restore to the factory settings: “1122”

6.4 Set Upload interval:

“time#minute”(minute range 1-120minute);

“md#second”(second range 10-60seconds)

6.5 Turn on/off LED: “LED#on , LED#off”

6.6 APN settings: “APN#parameter#account#password#”

6.7 Remote Restart: “sysrst”

6.8 Vibration Alarm: “6666#on# / 6666#off#”

6.9 Heartbeat Packet Time: heartbeat#No.#(no.=second)

6.10 Turn off GPRS data and location function: link#0#

6.11 Turn on GPRS data and location function: link#1#

6.12 Control Auto Power On/Off:

"pwonoff#day,hour,minute#day,hour,minute"

(for example: pwonoff#0,0,10#0,2,0 -- mean: the GPS tracker will work for 10 minutes then power off and after 2 hours later it will power on automatically again.)

7、 SMS operation

000#number#number#number# (binding three phone #), this SMS command can be used for sound callback.

333 (voice-activated dial-back call to binding numbers)

555 (turn off all features)

666 (vibration alarm SMS to binding number)

777 (vibration alarm call to binding numbers)

Disclaimer: This product development is only used for the safety guard of individuals, companies and transport fleets. Please abide by the relevant national laws and regulations, the company sales depart. won't bear any legal responsibility!